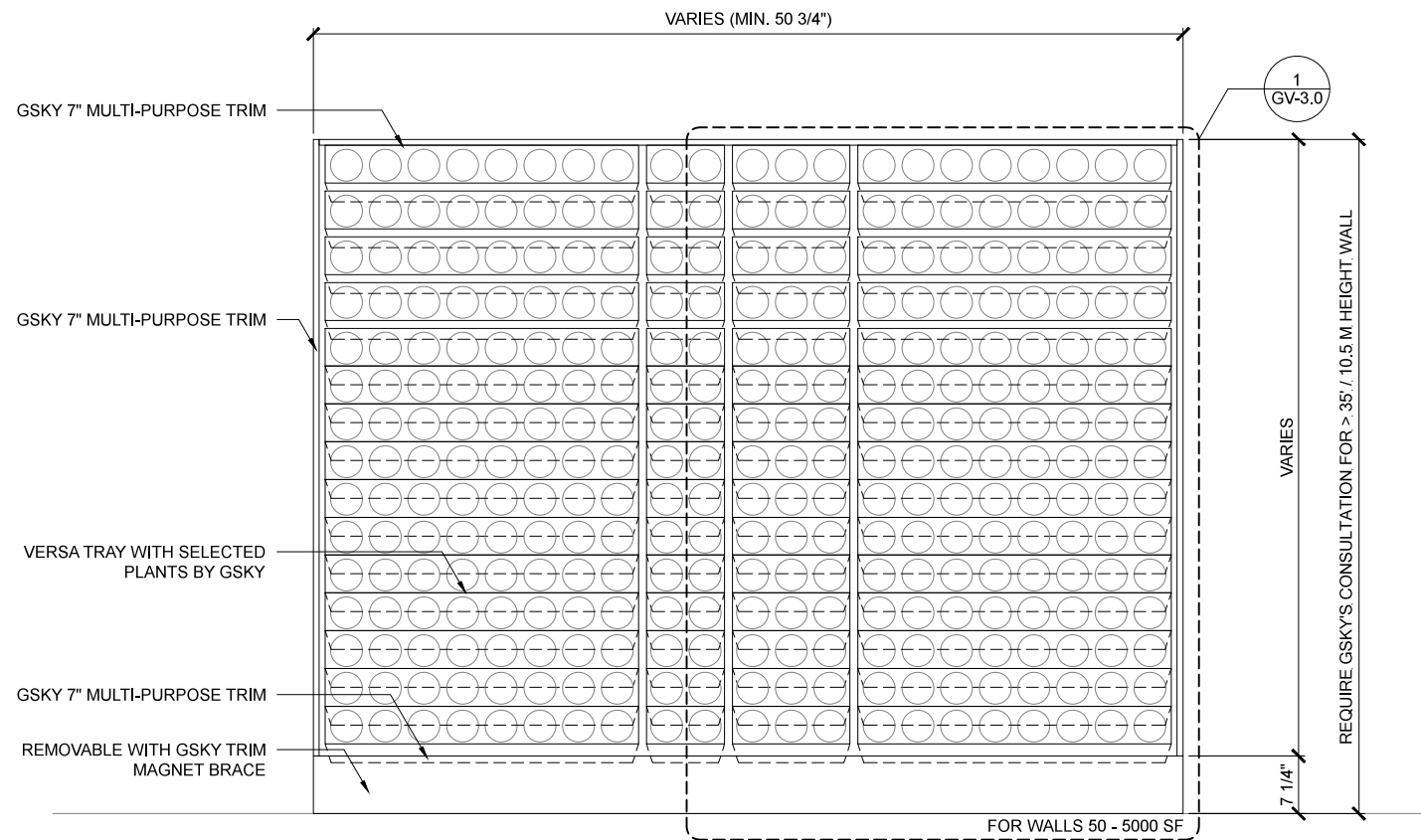
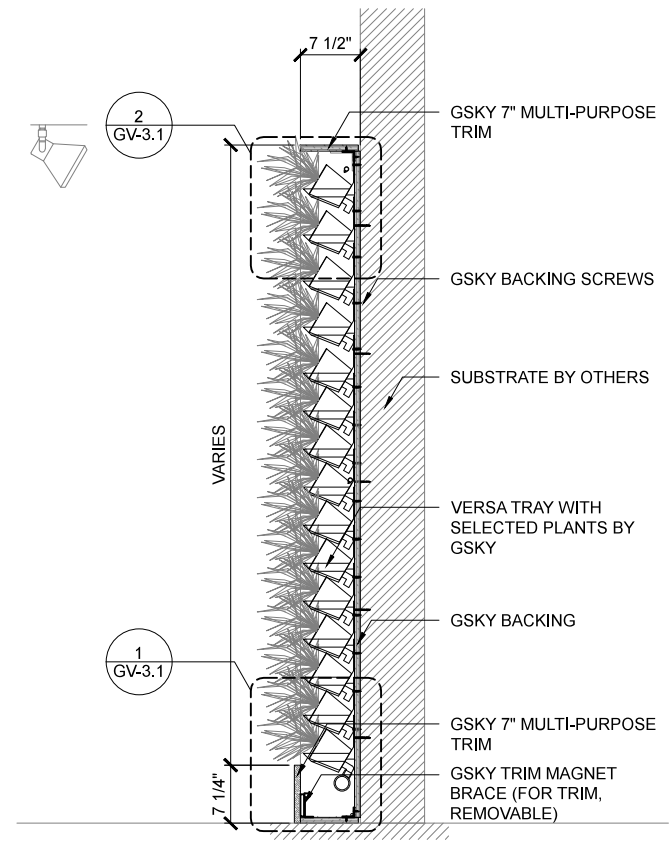


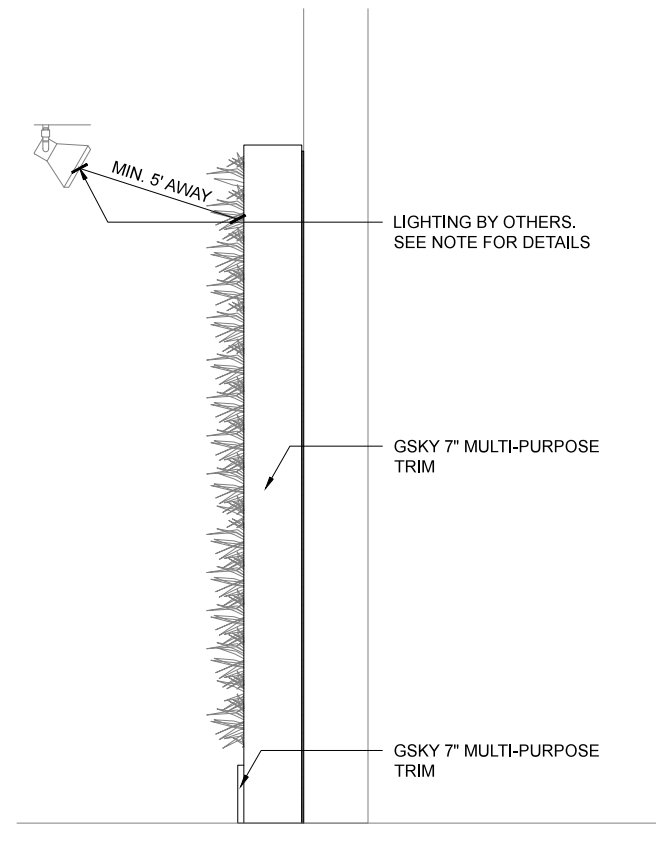
VERSA WALL[®]
 TO THE FLOOR / ICU BELOW WALL
 VTI-70



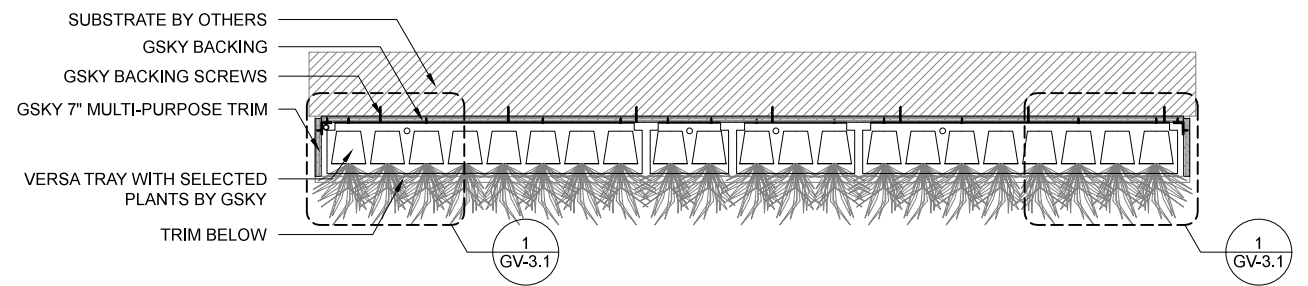
1 ELEVATION
SCALE 1/2" = 1'-0"



3 SECTION
SCALE 1/2" = 1'-0"



4 SIDE
SCALE 1/2" = 1'-0"



2 PLAN
SCALE 1/2" = 1'-0"



VERSA WALL[®]
VTI-70 GENERAL OVERVIEW
APR 10, 2016 11x17" (A3)

TO FLOOR
Weight is 10lbs/ft² / 50kg/m²

3/4" SIDE/TOP
7" BOTTOM
TRIM
Pre-finished or unfinished
See gsky.com for details.

ICU BELOW WALL
For 50 ft² / 5 m² to 5000 ft² / 500 m²
Min width 50 3/4" / 129cm

SERVICE			
MANUAL	N/A	N/A	N/A
AUTOMATED	At Wall	At Wall	At Wall

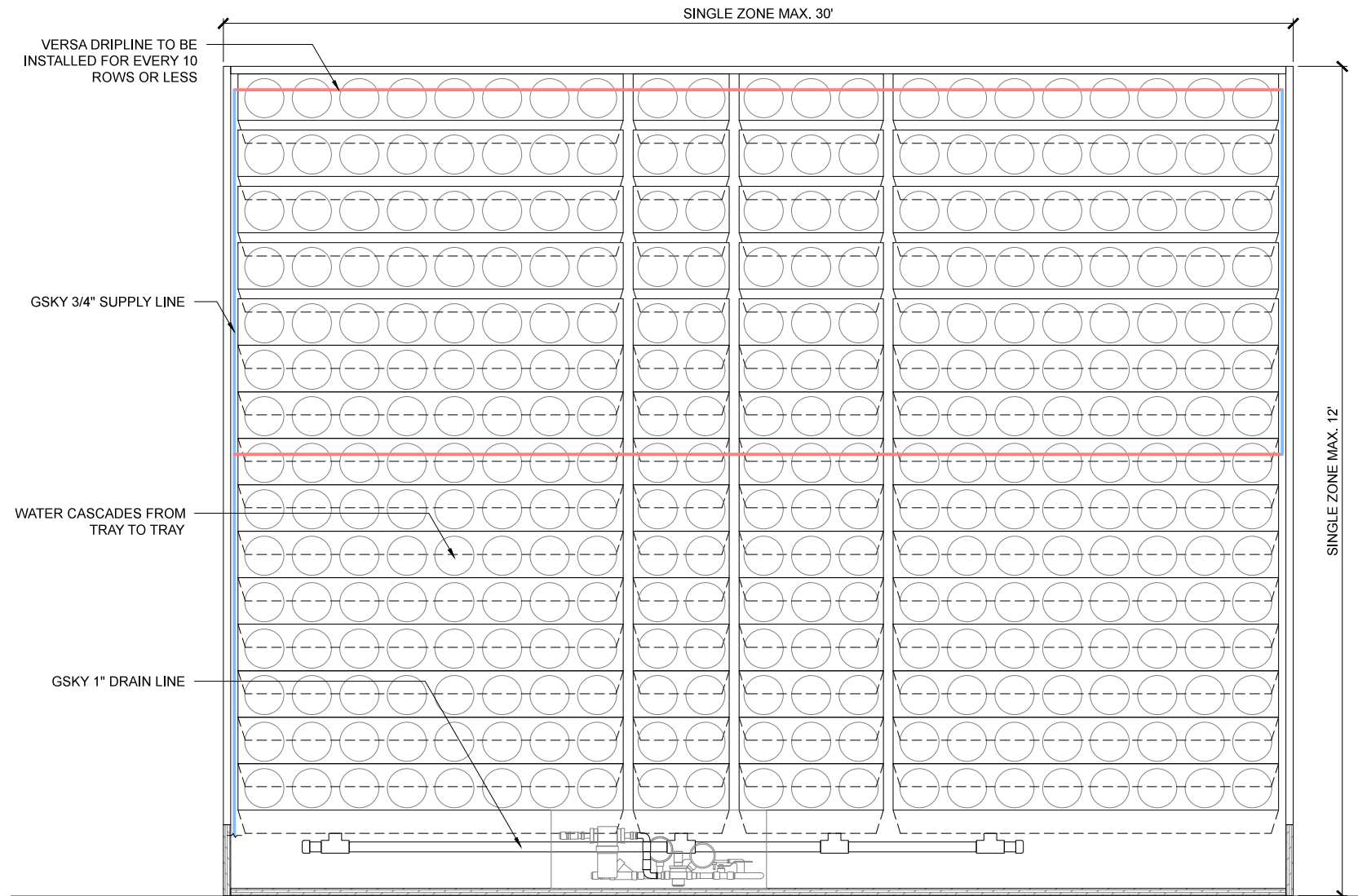
IRRIGATION
It is recommended to install a drain whenever possible. Require GSKy's consultation for > 35' / 10.5 m height wall.

LIGHTING
LED or Metal Halide Lights recommended
Duration: 10-12 hrs/day
Color Temp: 4000-4500K
Intensity: 150fc / 1500 lux

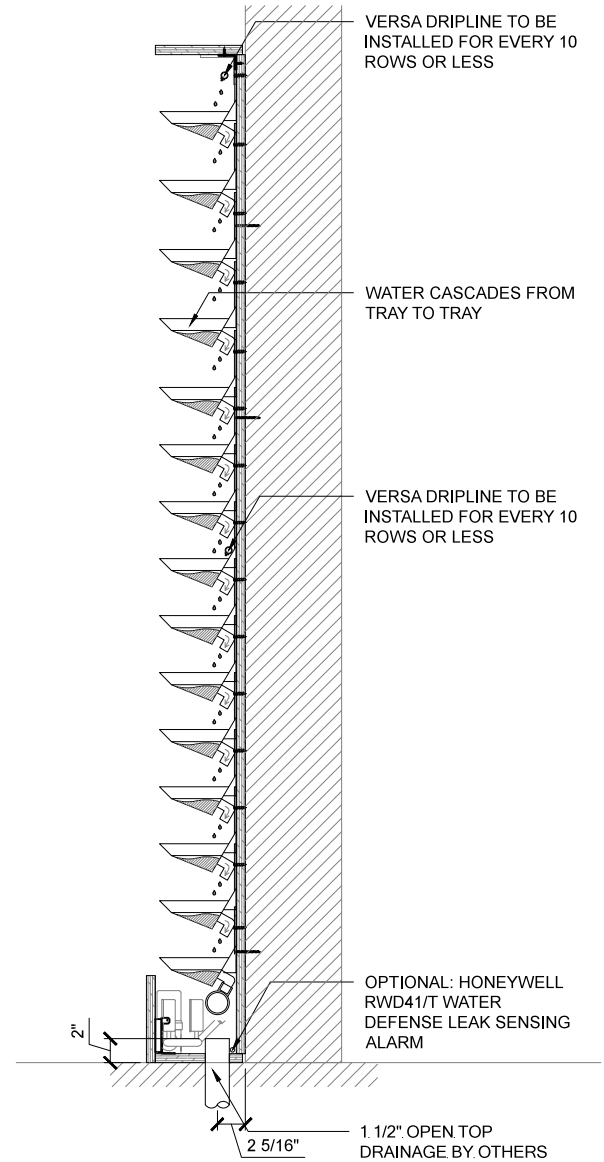
< 8'	OK		
< 13'	OK	OK	
> 13'		OK	OK

MAINT. ACCESS
Walls over 40' / 12m need additional considerations. See GSKy maintenance manual.

GV1.0



1 ELEVATION
SCALE 3/4" = 1'-0"



2 SECTION
SCALE 3/4" = 1'-0"



VERSA WALL[®]
VTI-70 IRRIGATION OVERVIEW
APR 10, 2016 11x17" (A3)

TO FLOOR
Weight is 10lbs/ft² / 50kg/m²

3/4" SIDE/TOP
7" BOTTOM
TRIM
Pre-finished or unfinished
See gsky.com for details.

ICU BELOW WALL
For 50 ft² / 5 m² to 5000 ft² / 500 m²
Min width 50 3/4" / 129cm

SERVICE			
MANUAL	N/A	N/A	N/A
AUTOMATED	At Wall	At Wall	At Wall

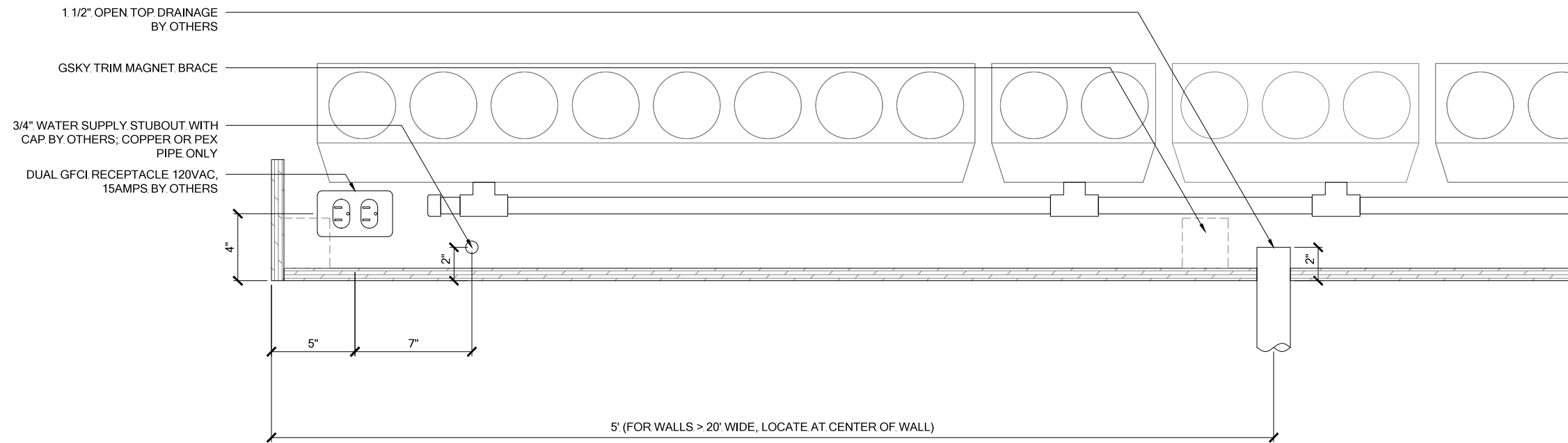
IRRIGATION
It is recommended to install a drain whenever possible. Require GSKy's consultation for > 35' / 10.5 m height wall.

LIGHTING
LED or Metal Halide Lights recommended
Duration 10-12 hrs/day
Color Temp 4000-4500K
Intensity 150fc / 1500 lux

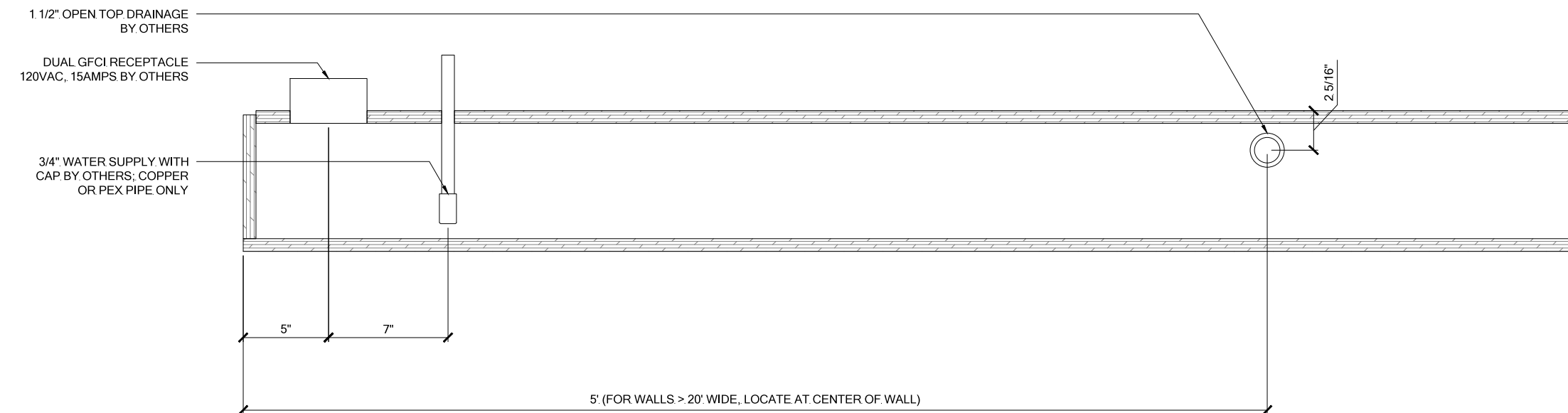
< 8'	OK		
< 13'	OK	OK	
> 13'		OK	OK

MAINT. ACCESS
Walls over 40' / 12m need additional considerations. See GSKy maintenance manual.

GV2.0



1 ELEVATION
SCALE 1 1/2" = 1'-0"



2 PLAN
SCALE 1 1/2" = 1'-0"



VERSA WALL[®]
VTI-70 MECH. LAYOUT LEFT
APR 10, 2016 11x17" (A3)

TO FLOOR
Weight is 10lbs/ft² 50kg/m²

3/4" SIDE/TOP
7" BOTTOM
TRIM
Pre-finished or unfinished
See gsky.com for details.

ICU BELOW WALL
For 50 ft² / 5 m² to 5000 ft² / 500 m²
Min width 50 3/4" / 129cm

SERVICE			
MANUAL	N/A	N/A	N/A
AUTOMATED	At Wall	At Wall	At Wall

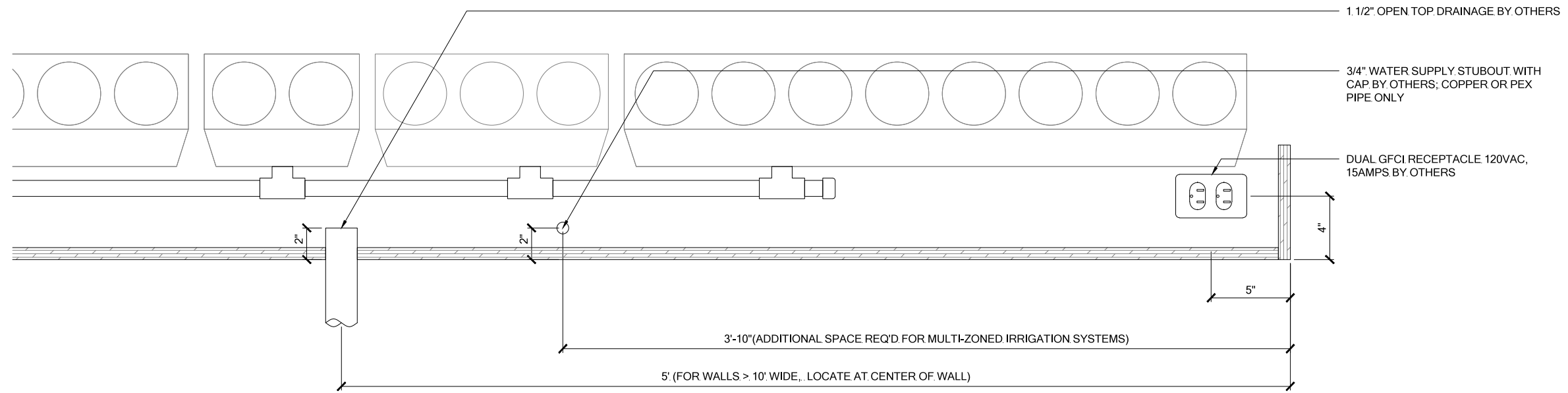
IRRIGATION
It is recommended to install a drain whenever possible. Require GSKy's consultation for > 35' / 10.5 m height wall.

LIGHTING
LED or Metal Halide Lights recommended
Duration 10-12 hrs/day
Color Temp 4000-4500K
Intensity 150fc / 1500 lux

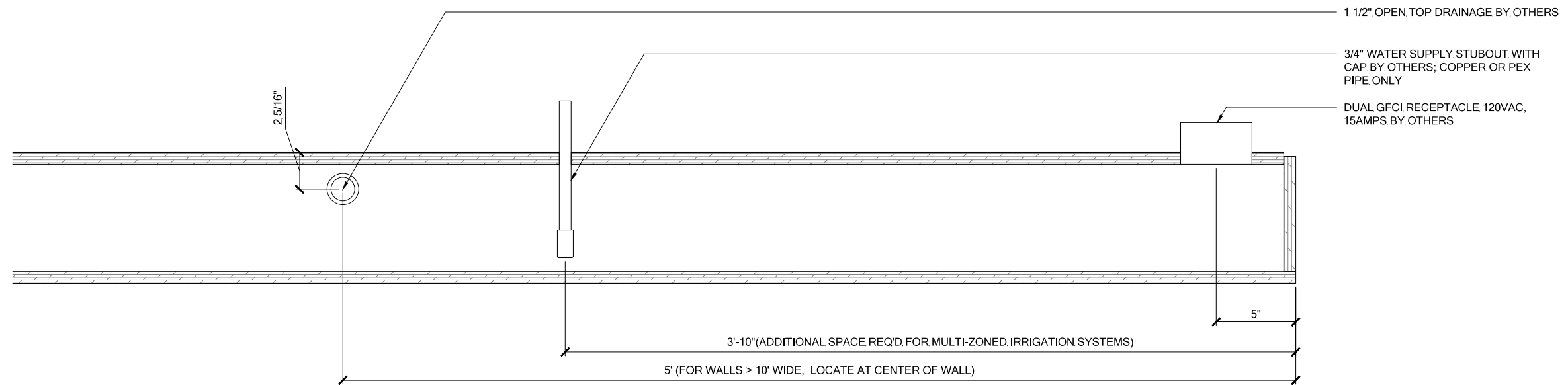
< 8'	OK		
< 13'	OK	OK	
> 13'		OK	OK

MAINT. ACCESS
Walls over 40' / 12m need additional considerations. See GSKy maintenance manual.

GV2.1



1 ELEVATION
SCALE 1 1/2" = 1'-0"



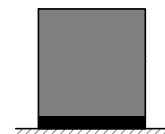
2 PLAN
SCALE 1 1/2" = 1'-0"



VERSA WALL®

VTI-70 MECH. LAYOUT RIGHT

APR 10, 2016 11x17" (A3)



TO FLOOR
Weight is 10lbs/ft² 50kg/m²

3/4"	SIDE/TOP
7"	BOTTOM

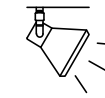
TRIM
Pre-finished or unfinished
See gsky.com for details.



ICU BELOW WALL
For 50 ft² / 5 m² to 5000 ft² / 500 m²
Min width 50 3/4" / 129cm

SERVICE			
MANUAL	N/A	N/A	N/A
AUTOMATED	At Wall	At Wall	At Wall

IRRIGATION
It is recommended to install a drain whenever possible. Require GSKy's consultation for > 35' / 10.5 m height wall.



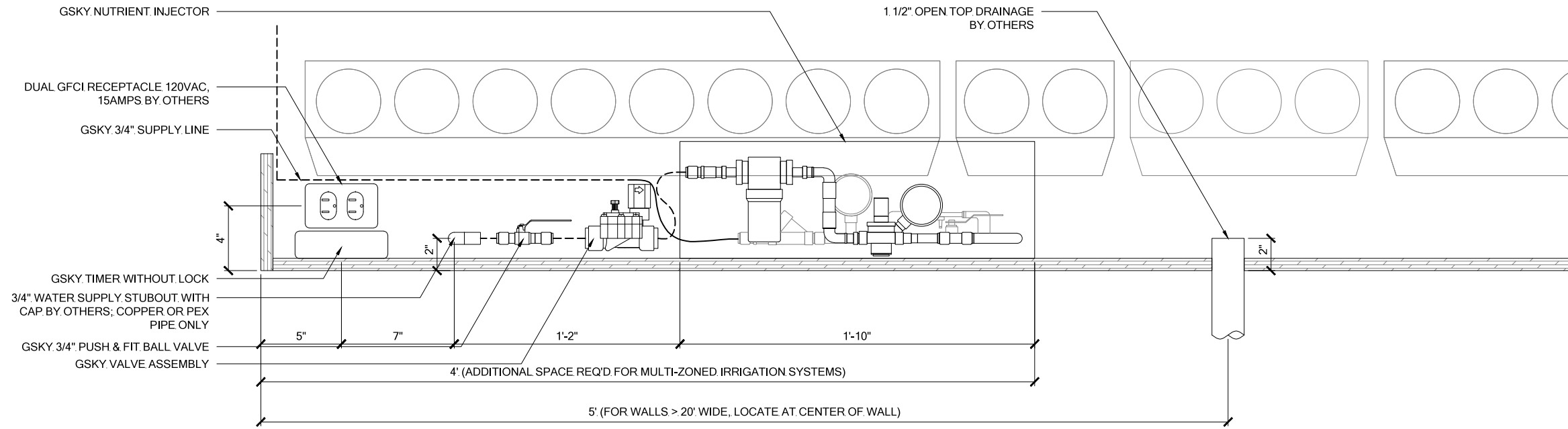
LIGHTING
LED or Metal Halide Lights recommended

Duration	10-12 hrs/day
Color Temp	4000-4500K
Intensity	150fc / 1500 lux

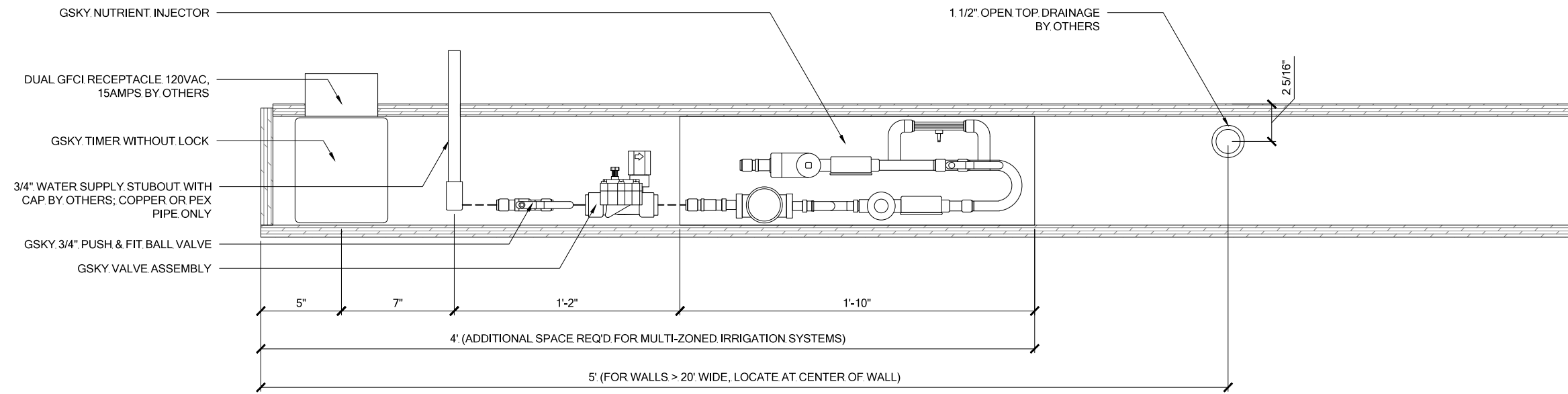
< 8'	OK			
< 13'	OK	OK		
> 13'		OK	OK	OK

MAINT. ACCESS
Walls over 40' / 12m need additional considerations. See GSKy maintenance manual.

GV2.1.1



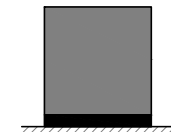
1 ELEVATION
SCALE 1 1/2" = 1'-0"



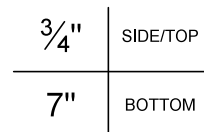
2 PLAN
SCALE 1 1/2" = 1'-0"



VERSA WALL®
VTI-70 IRRIGATION LAYOUT LEFT
APR 10, 2016 11x17" (A3)



TO FLOOR
Weight is 10lbs/ft² / 50kg/m²



TRIM
Pre-finished or unfinished
See gsky.com for details.



ICU BELOW WALL
For 50 ft² / 5 m² to 5000 ft² / 500 m²
Min width 50 3/8" / 129cm

SERVICE			
MANUAL	N/A	N/A	N/A
AUTOMATED	At Wall	At Wall	At Wall

IRRIGATION
It is recommended to install a drain whenever possible. Require GSKy's consultation for > 35' / 10.5 m height wall.



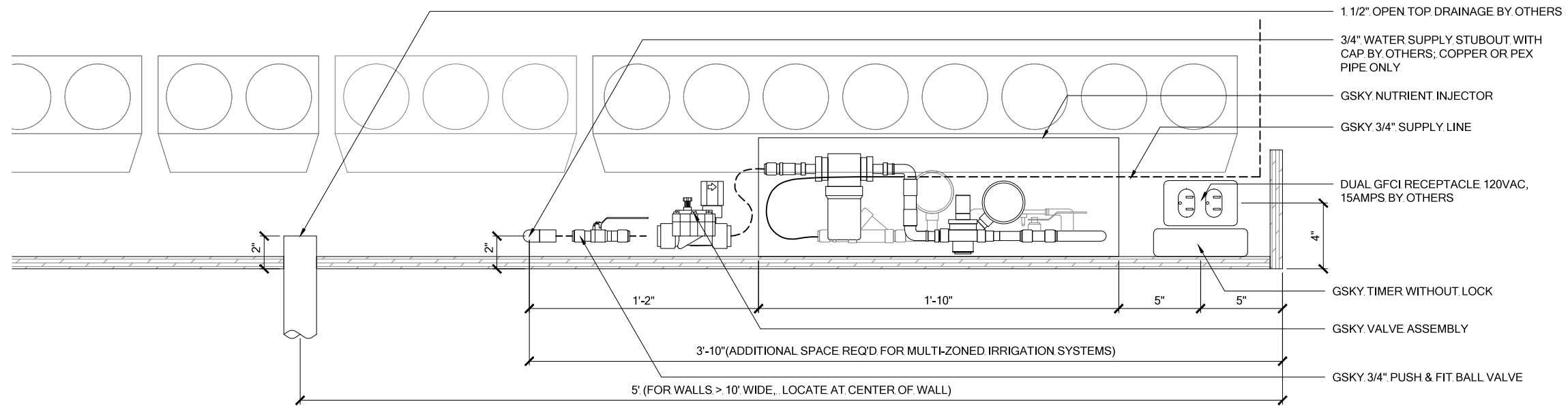
LIGHTING
LED or Metal Halide Lights recommended

Duration
10-12 hrs/day
Color Temp
4000-4500K
Intensity
150fc / 1500 lux

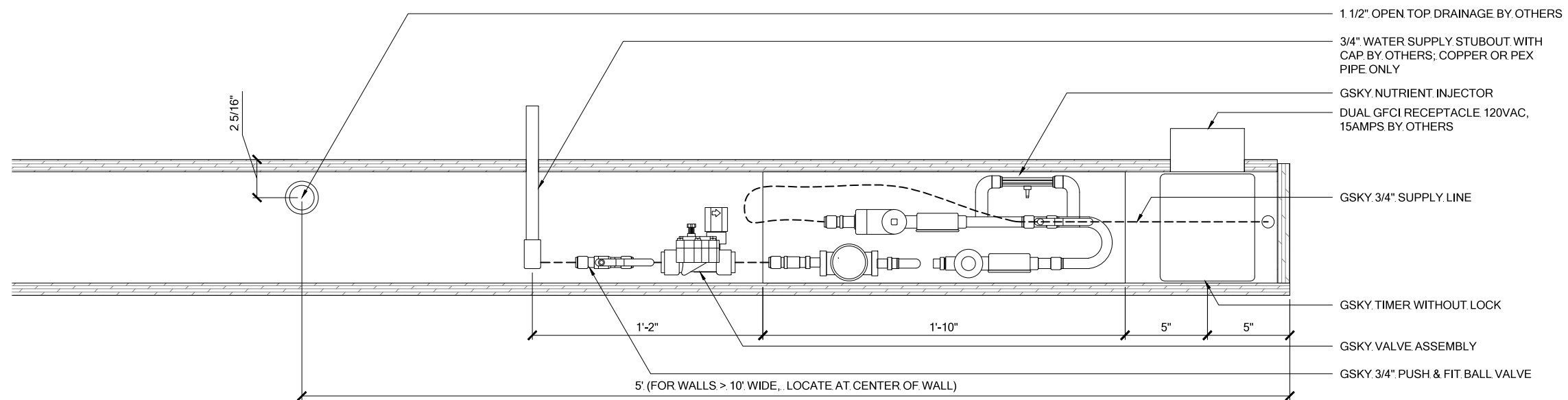
< 8'	OK			
< 13'	OK	OK		
> 13'		OK	OK	OK

MAINT. ACCESS
Walls over 40' / 12m need additional considerations. See GSKy maintenance manual.

GV2.2



1 ELEVATION
 SCALE 1 1/2" = 1'-0"



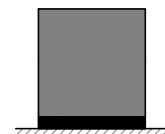
2 PLAN
 SCALE 1 1/2" = 1'-0"



VERSA WALL®

VTI-70 IRRIGATION LAYOUT RIGHT

APR 10, 2016 11x17" (A3)



TO FLOOR
 Weight is 10lbs/ft² 50kg/m²

3/4"	SIDE/TOP
7"	BOTTOM

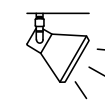
TRIM
 Pre-finished or unfinished
 See gsky.com for details.



ICU BELOW WALL
 For 50 ft² / 5 m² to 5000 ft² / 500 m²
 Min width 50 3/4" / 129cm

SERVICE			
MANUAL	N/A	N/A	N/A
AUTOMATED	At Wall	At Wall	At Wall

IRRIGATION
 It is recommended to install a drain whenever possible. Require GSKy's consultation for > 35' / 10.5 m height wall.



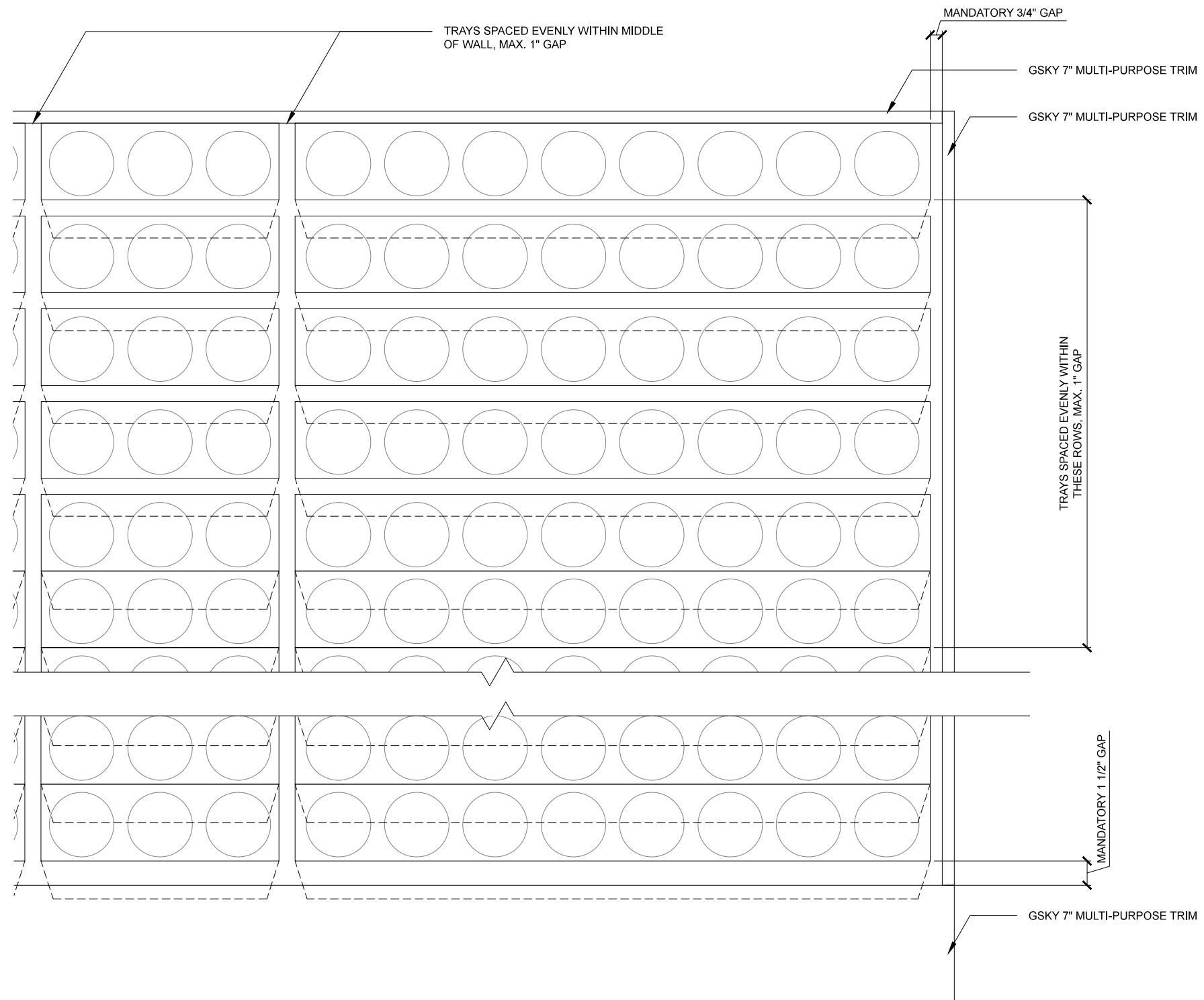
LIGHTING
 LED or Metal Halide Lights recommended

Duration	10-12 hrs/day
Color Temp	4000-4500K
Intensity	150fc / 1500 lux

< 8'	OK			
< 13'	OK	OK		
> 13'		OK	OK	OK

MAINT. ACCESS
 Walls over 40' / 12m need additional considerations. See GSKy maintenance manual.

GV2.2.1



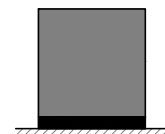
1 TRAY LAYOUT
SCALE 1 1/2" = 1'-0"



VERSA WALL®

VTI-70 TRAY LAYOUT

APR 10, 2016 11x17" (A3)



TO FLOOR
Weight is 10lbs/ft² 50kg/m²

3/4"	SIDE/TOP
7"	BOTTOM

TRIM
Pre-finished or unfinished
See gsky.com for details.



ICU BELOW WALL
For 50 ft² / 5 m² to 5000 ft² / 500 m²
Min width 50 3/4" / 129cm

SERVICE			
MANUAL	N/A	N/A	N/A
AUTOMATED	At Wall	At Wall	At Wall

IRRIGATION
It is recommended to install a drain whenever possible. Require GSKy's consultation for > 35' / 10.5 m height wall.



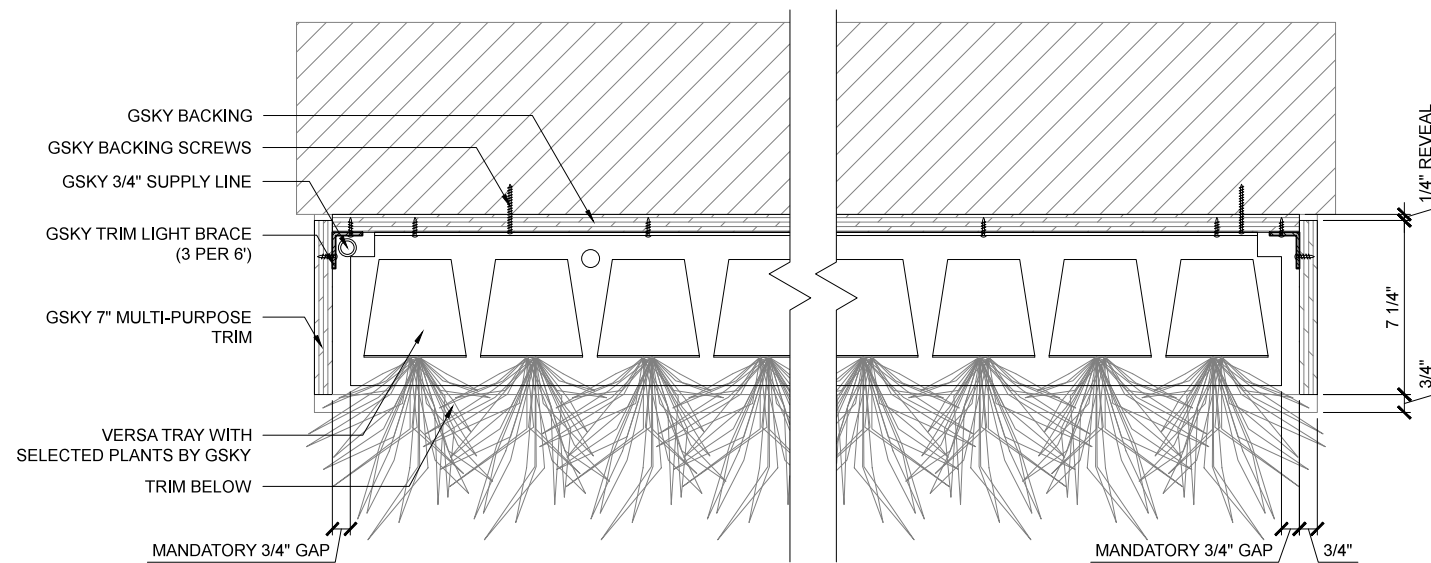
LIGHTING
LED or Metal Halide Lights recommended

Duration	10-12 hrs/day
Color Temp	4000-4500K
Intensity	150fc / 1500 lux

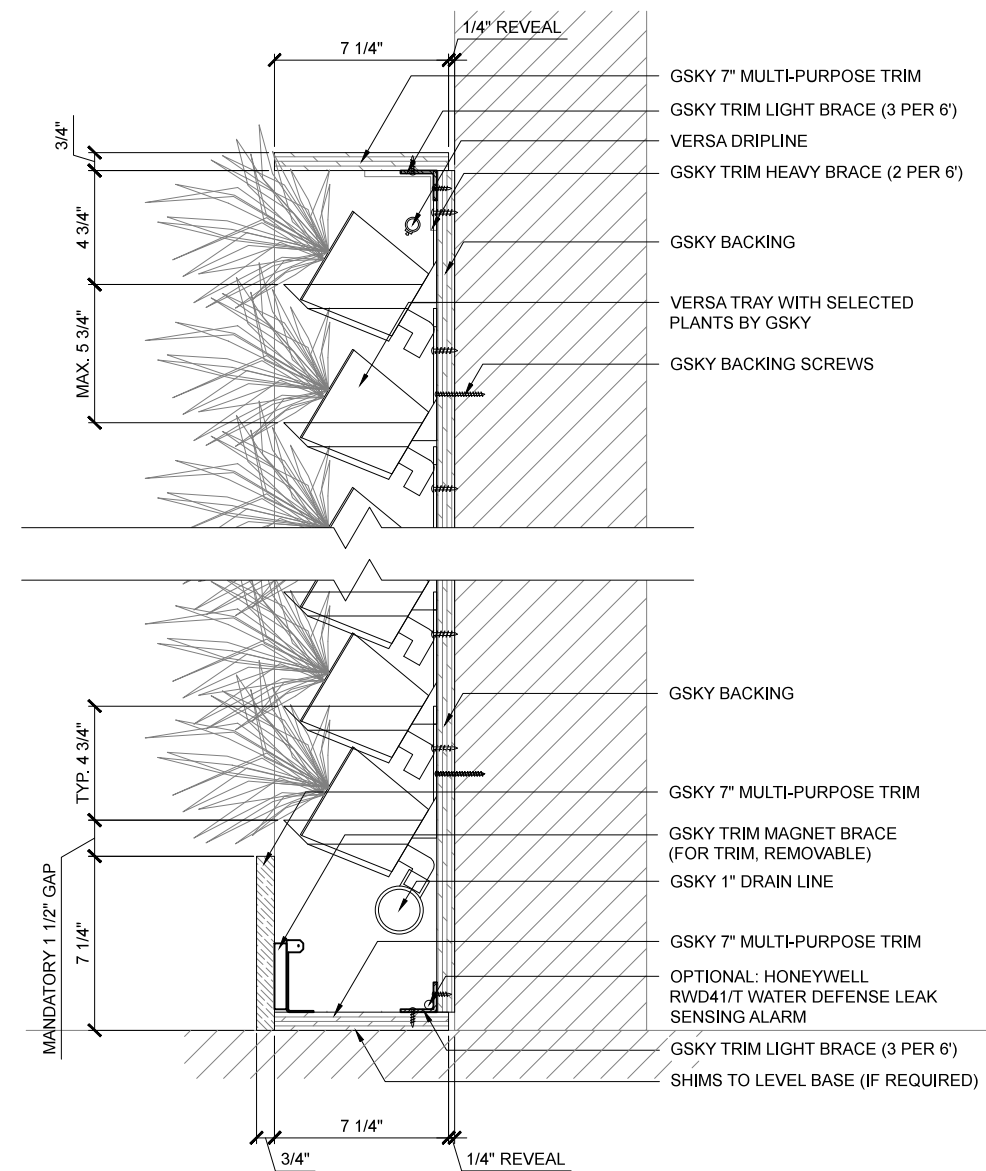
< 8'	OK		
< 13'	OK	OK	
> 13'		OK	OK

MAINT. ACCESS
Walls over 40' / 12m need additional considerations. See GSKy maintenance manual.

GV3.0



1 PLAN
SCALE 1 1/2" = 1'-0"



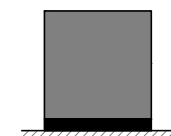
2 SECTION
SCALE 1 1/2" = 1'-0"



VERSA WALL®

VTI-70 DETAILS

APR 10, 2016 11x17" (A3)



TO FLOOR
Weight is 10lbs/ft² 50kg/m²

3/4"	SIDE/TOP
7"	BOTTOM

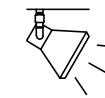
TRIM
Pre-finished or unfinished
See gsky.com for details.



ICU BELOW WALL
For 50 ft² / 5 m² to 5000 ft² / 500 m²
Min width 50 3/4" / 129cm

SERVICE			
MANUAL	N/A	N/A	N/A
AUTOMATED	At Wall	At Wall	At Wall

IRRIGATION
It is recommended to install a drain whenever possible. Require GSKy's consultation for > 35' / 10.5 m height wall.



LIGHTING
LED or Metal Halide Lights recommended

Duration	10-12 hrs/day
Color Temp	4000-4500K
Intensity	150fc / 1500 lux

< 8'	OK			
< 13'	OK	OK		
> 13'		OK	OK	OK

MAINT. ACCESS
Walls over 40' / 12m need additional considerations. See GSKy maintenance manual.

GV3.1